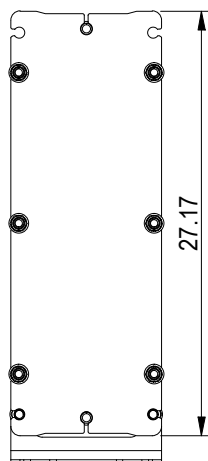
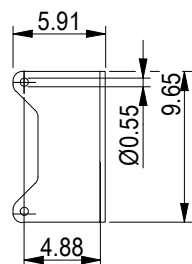
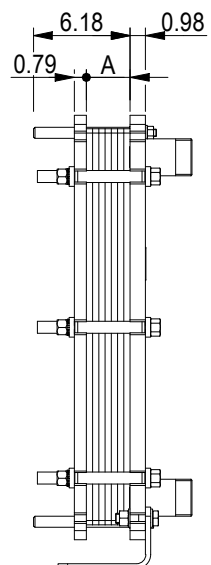


This document and its contents are subject to copyrights and other intellectual property rights owned by Alfa Laval (pub) or any of its affiliates (Alfa Laval). No part of this document may be copied, reproduced or transmitted in any form or by any means, or for any purpose, without Alfa Laval's prior express written permission. Information and services provided in this document are made as a benefit and service to the user, and no representations or warranties are made about the accuracy or suitability of this information and these services for any purpose. All rights are reserved.

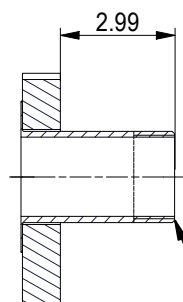
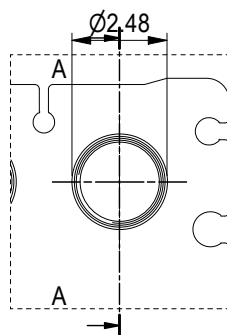
**PRESSURE PLATE**  
(MOVABLE)



Space between pressure plate and supporting column should be kept free from fixed installations!



ASME B1.20.1 - 2-11.5 NPT, ALLOY 316L, 101 mm  
S1, S2, S3, S4 A-A:



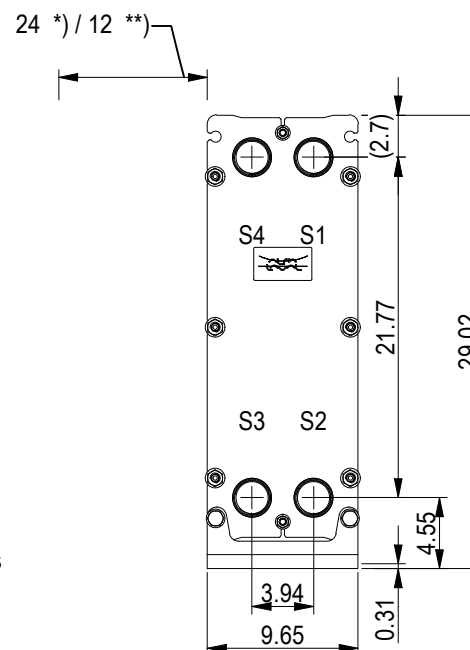
ASME B1.20.1 - 2-11.5 NPT

NO. OF UNITS 1

null GPM  
null GPM

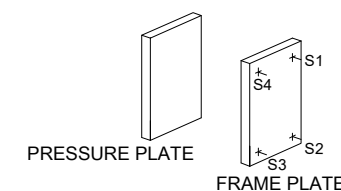
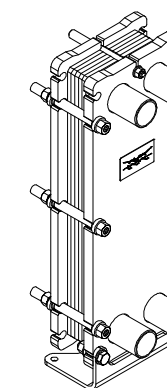
**FRAME PLATE**

All dimensions in inches



\*) Recommended free space for opening and closing to be applied on both sides

\*\* Free space can be reduced to this distance on one of the sides



APPROX. OUTER DIMENSIONS

LENGTH 6.7 in  
WIDTH 10.2 in  
HEIGHT 27.6 in

APPROX. WEIGHTS

NET WEIGHT, EMPTY 153 lb  
WEIGHT FULL OF WATER 161 lb  
PLATE MATERIAL ALLOY 316  
PLATE THICKNESS 0.5 mm  
GASKET NBRP Clip-on

CHANNEL ARRANGEMENT 1\*9 ML / 1\*10 MH



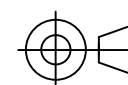
www.alfalaval.com

DRAWING  
GASKETED PLATE HEAT EXCHANGER

**T5-BFG**

ASME  
Code Section VIII Div.1

MAWP 145 psi at 150.1 °F  
MDMT 32.0 °F at 145 psi  
Designed and constructed in accordance with the 2019 ASME Code.



8240171459  
T5-BFG, 20 plates

Do not use this drawing for foundation bolting or piping layout

DATE 6/1/22  
REVISION 0